

**FRONT YARD SET BACK TREE REMOVAL
REQUEST**

September 2022

Date: 8/24/2022

Requested by: Rachel Raynor dtucker@frontporch.net

Address: 800 N. Brand Blvd., 19th Floor, Glendale, CA 91203

Location of Tree: 3775 Modoc Road, Santa Barbara, CA 93105

Tree Species: (1) *Eucalyptus sideroxylon*, **Common Name:** Red Ironbark
(7) *Eucalyptus viminalis*, Manna Gum
(1) *Corymbia citriodora*, Lemon-scented Gum

Zoning/Setback: R-2- 20'

Reason for Removal: Refer to Arborist Report Recommendations on Sheet L3. The trees have largely outgrown its current location and should be replaced with a more suitable species in a location that does not conflict with overhead power distribution.

Proposed Replacement: Yes (7) 24" box Island Oak. No

Advisory Committee Recommendation: Approve Removal: Deny Removal: N/A

Staff Recommendation: Approve Removal: Deny Removal: N/A

Date Posted: 9/8/2022

Comments: The Committee recommends (5/0) that the Commission deny the removals.

PHOTO INVENTORY



Tree Removal Application

APPLICANT/OWNER DETAILS

<input type="text" value="Raynor"/>	<input type="text" value="Raynor"/>	
YOUR LAST NAME	YOUR FIRST NAME	
<input type="text" value="Front Porch Development company"/>		
OWNER'S FULL NAME (IF YOU ARE NOT THE OWNER)		
<input type="text" value="800 N. Brand Blvd., 19th Floor"/>		
YOUR MAILING ADDRESS		
<input type="text" value="Glendale"/>	<input type="text" value="CA"/>	<input type="text" value="91203"/>
CITY	STATE	ZIP CODE
<input type="text" value="(805) 736-1333"/>	<input type="text" value="DTUCKER@frontporch.net"/>	
DAYTIME PHONE	EMAIL ADDRESS	

TREE INFORMATION

TYPE OF TREE: **SETBACK TREE(S)** **STREET TREE(S)**

<input type="text" value="9"/>	<input type="text" value="3775 Modoc Road, Santa Barbara, CA 93105"/>
NUMBER OF TREES	LOCATION OF TREE(S) - please be sure to indicate the property address where the trees are located

SPECIES OF TREE(S), IF KNOWN

REASONS FOR REMOVAL (TELL US WHY YOU WANT TO REMOVE THE TREE[S]). PLEASE INCLUDE:

- Whether or not the removal application is associated with new development or redevelopment of property
- Status of development application, including whether the project is scheduled for review by the Single Family Design Board, Architectural Board of Review, or Historic Landmarks Commission
- Whether or not the tree is a designated Specimen or Historic Tree or located on a property with a designated Historic Landmark

If you feel you need more space to outline the goals of your request, please feel free to attach a supplemental letter when you submit this form.

Refer to Arborist Report Recommendations on Sheet L3. The trees have largely outgrown its current location and should be replaced with a more suitable species in a location that does not conflict with overhead power distribution.

WILL YOU REPLACE THE TREE(S)? YES NO

IF YES, WHAT WILL YOU REPLACE THE TREE(S) WITH?

VICINITY MAP



PROJECT DATA

Project Address: 3775 Modoc Road, Santa Barbara, CA 93105
Assessor Parcel #: 049-030-030
Land Use: Medium Density Residential
General Plan Neighborhood (Appendix B): Hidden Valley
Zone Designation: R-2
Lot Size: 10.02 Acres (436,342 SF)
Lot Slope: 2%

SHEET INDEX

- L1 Cover Sheet
- L2 Photos of Trees Proposed for Removal
- L3 Arborist Report Excerpt (Trees 1-9)
- L4 Tree Removal Plan
- L5 Tree Proposal Plan and Schedule

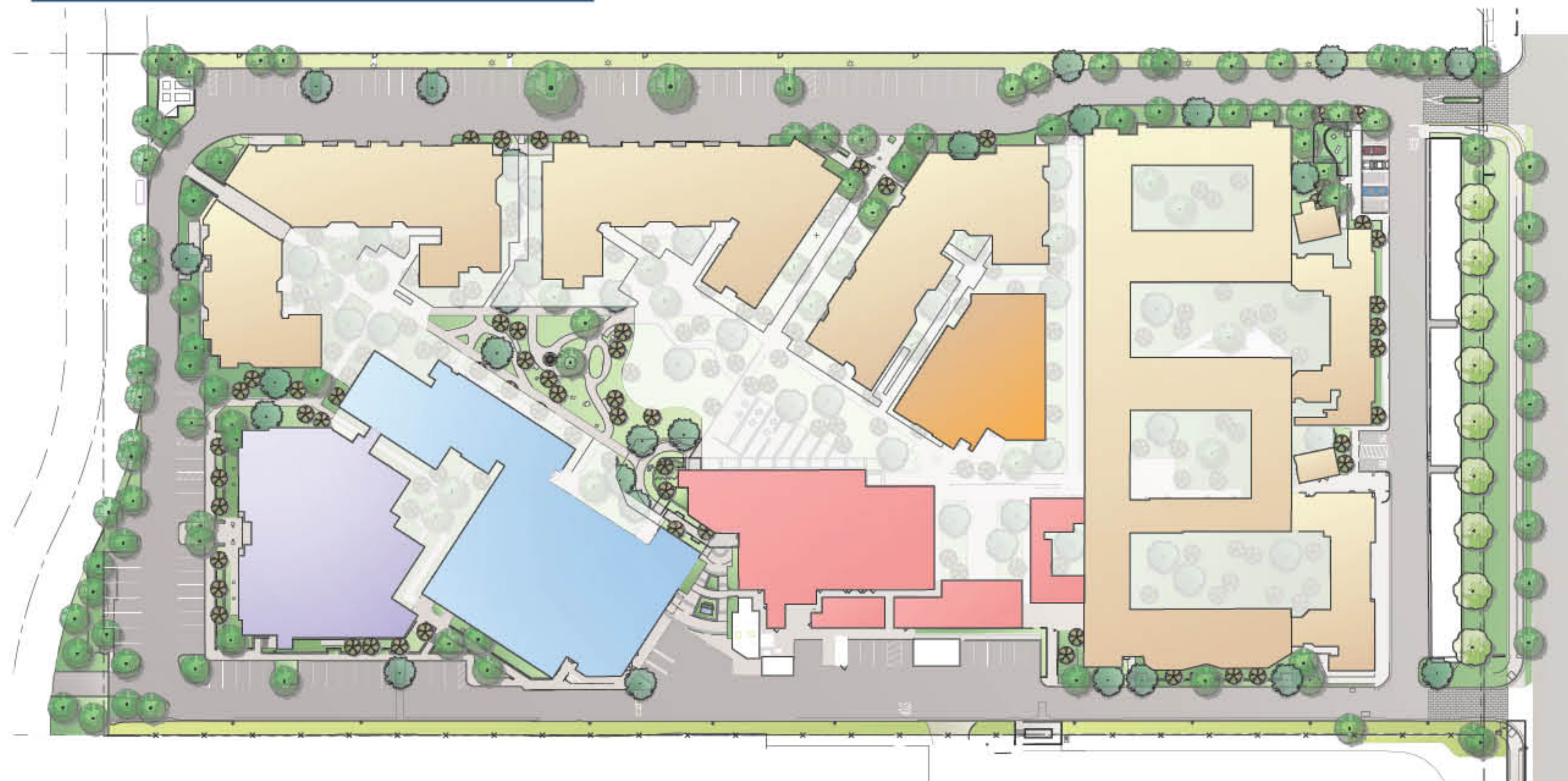
PROJECT DIRECTORY

Owner: Front Porch Development Company
800 N. Brand Blvd., 19th Floor
Glendale, CA 91203
Tel (805) 736-1333
Contact: Douglas Tucker

Landscape Architect: RRM Design Group
3765 S. Higuera St., Suite 102
San Luis Obispo, CA 93401
Tel (805) 543-1794
Contact: Chris Dufour

Planner: RRM Design Group
10 East Figueroa St, Suite 200
Santa Barbara, CA 93101
Tel (805)963-8283
Contact: Rachel Raynor

CONCEPTUAL LANDSCAPE PLAN



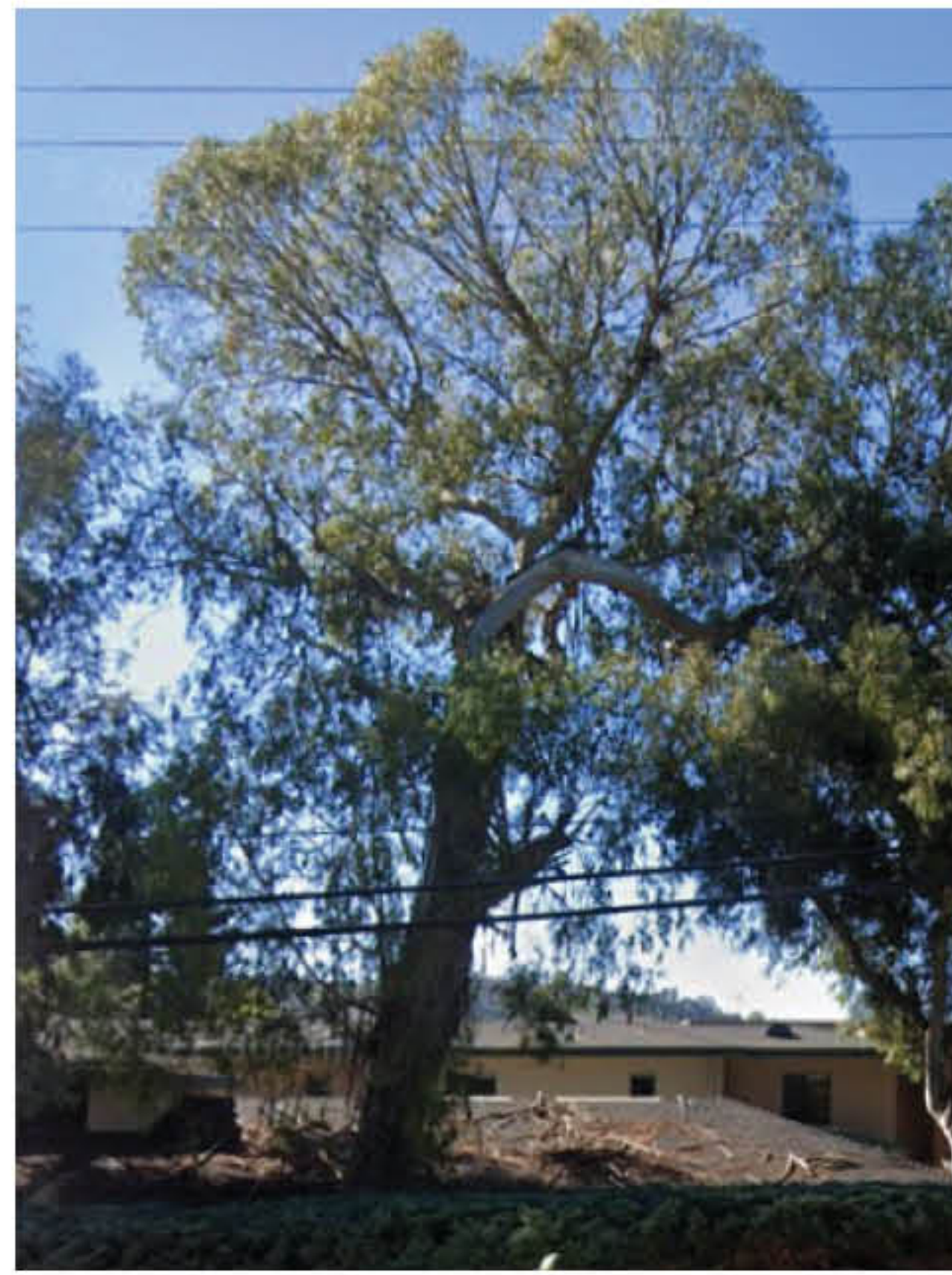
VISTA DEL MONTE - TREE APPLICATION

COVER SHEET





TREE 1 - *Eucalyptus sideroxylon*



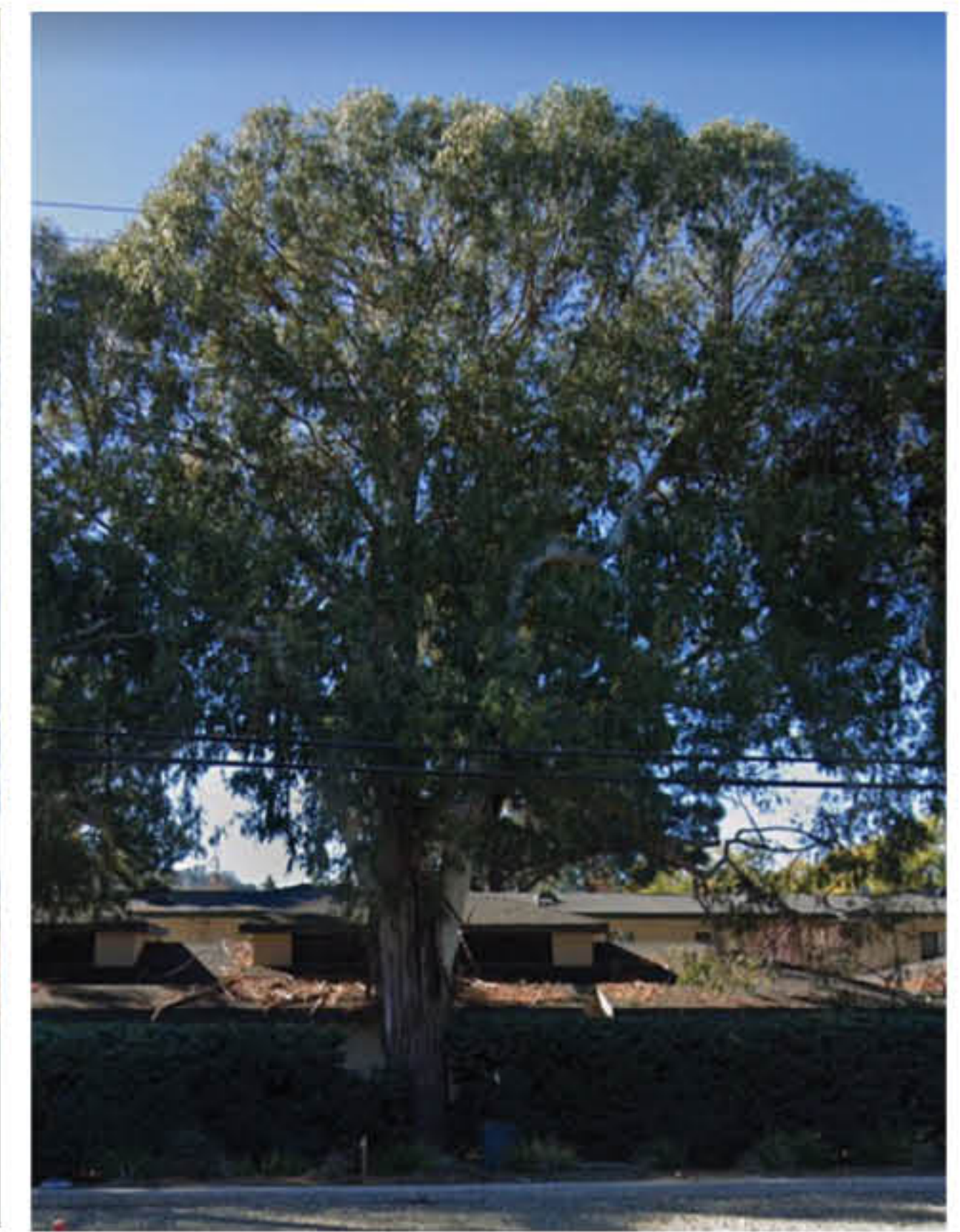
TREE 2 - *Eucalyptus viminalis*



TREE 3 - *Eucalyptus viminalis*



TREE 4 - *Eucalyptus viminalis*



TREE 5 - *Eucalyptus viminalis*



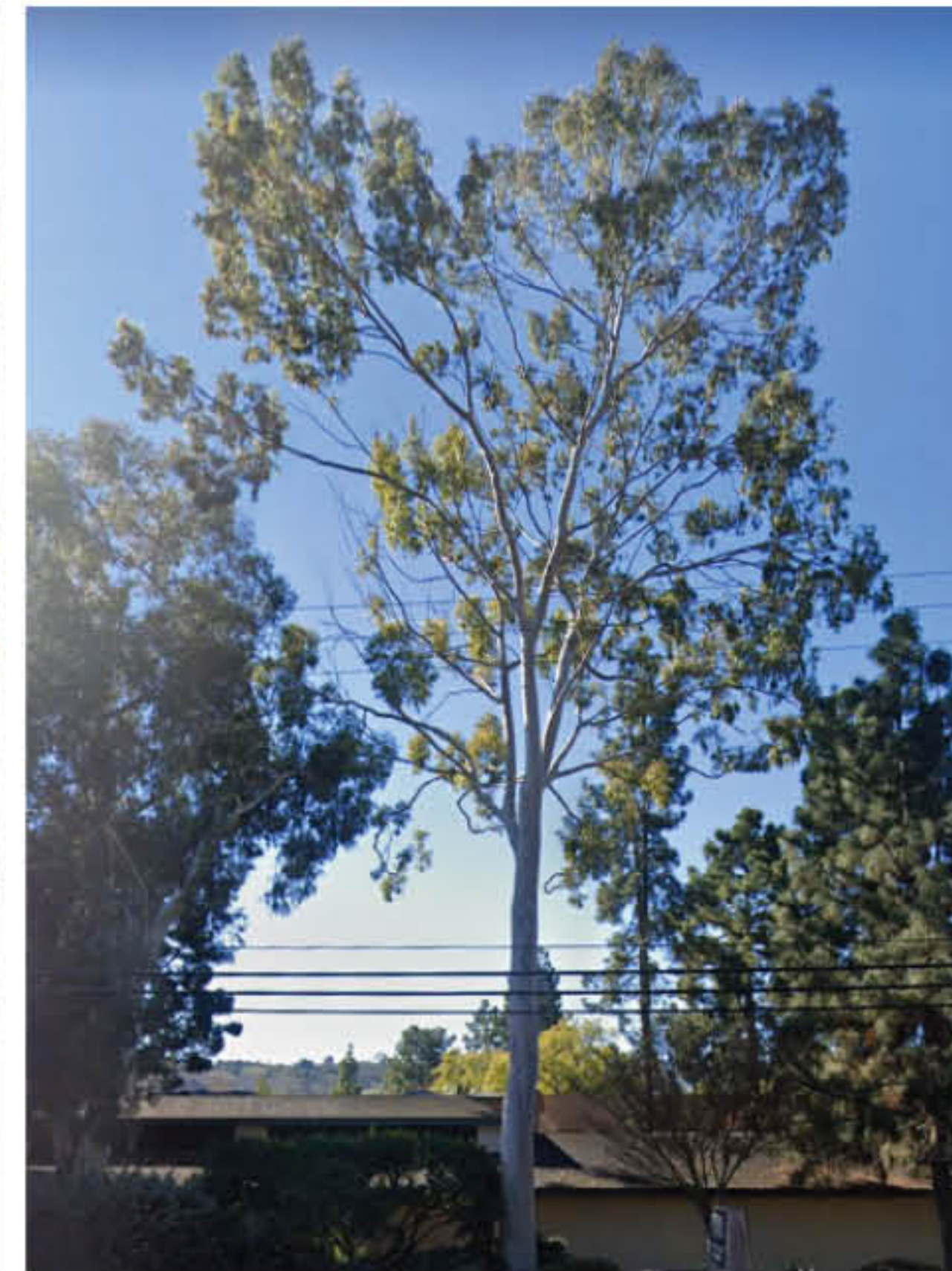
TREE 6 - *Eucalyptus viminalis*



TREE 7 - *Eucalyptus viminalis*

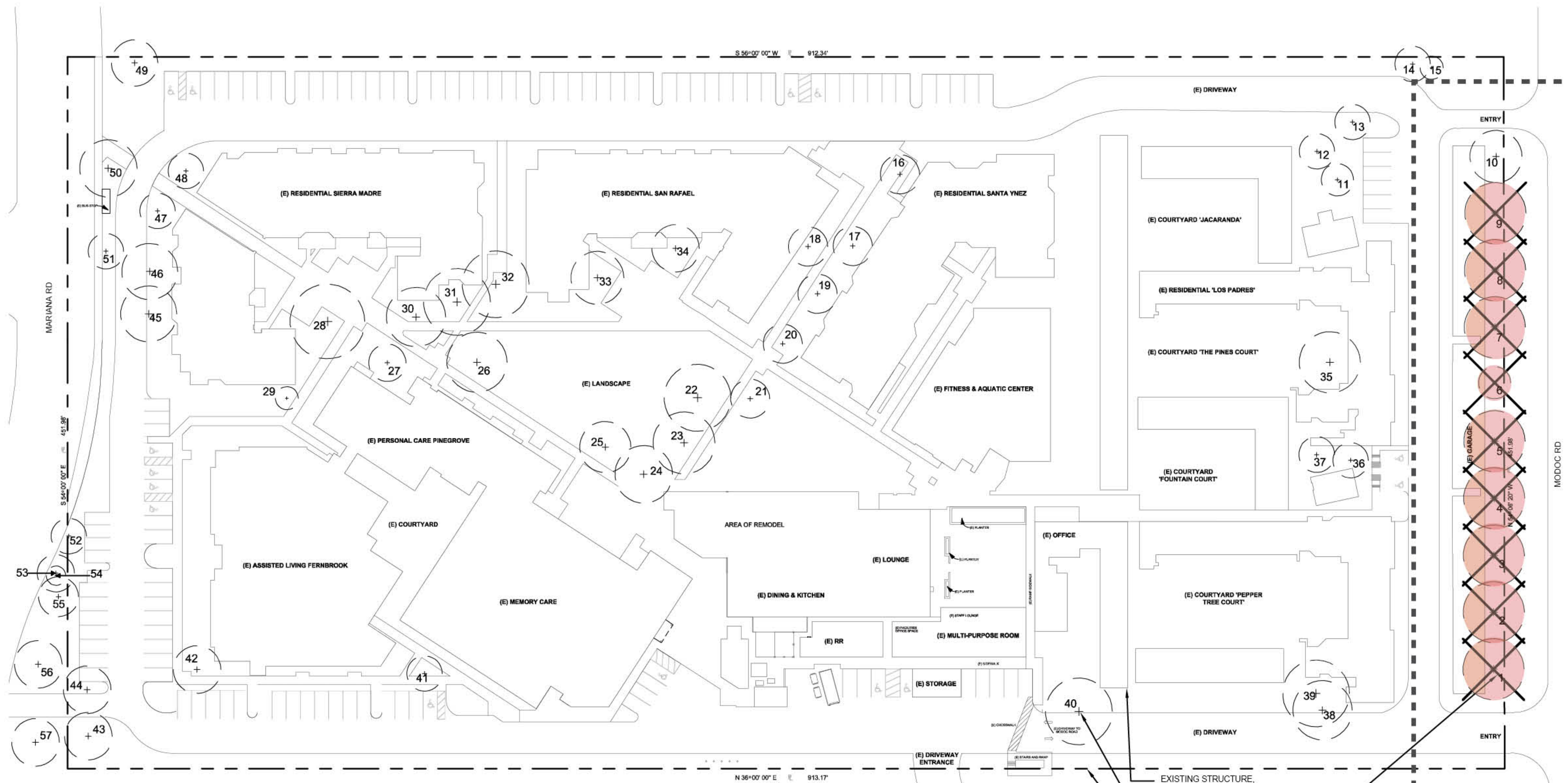


TREE 8 - *Eucalyptus viminalis*



TREE 9 - *Corymbia citriodora*

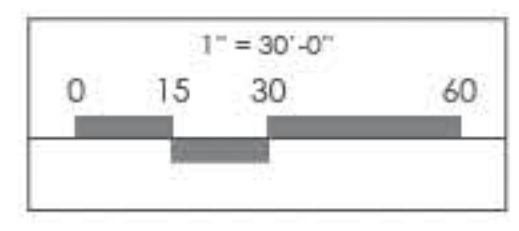
TAG #	BOTANICAL NAME	TARGET DESCRIPTION	DBH	HEIGHT	STRUCTURE	NOTES	MITIGATION RECOMMENDATIONS
1	<i>Eucalyptus sideroxylon</i>	Garage, Drive Aisle, Sidewalk	27.5	50	2	Southern California Edison (SCE) has continually pruned northern portion of crown due to proximity to nearby overhead power lines. This has created an unbalanced crown weight distribution and places the cantilevered load over the adjacent row of garages on the Vista Del Monte (VDM) property. There are several instances of poor structure such as codominant leaders and included bark from years of utility pruning. Tree has developed a lean in the direction of the VDM garages and although the root collar indicates a stable root structure, the cantilevered weight of the crown combined with the uncorrected lean could lead to failure. Tree is in good health with slight indications of stress.	Southern portion of crown is oversized and will require consistent pruning to maintain a balanced shape and reduce the weight of the cantilevered limbs. Tree has outgrown its location and should be removed and replaced with a more suitable species in a location that does not conflict with overhead power distribution.
	COMMON NAME	TARGET PROXIMITY	OCC. RATE	HEALTH	DISPOSITION		
	red ironbark	10	2	4	R		
2	<i>Eucalyptus viminalis</i>	Garage, Drive Aisle, Sidewalk	38.0	50	2	SCE has continually pruned northern portion of crown due to proximity to nearby overhead power lines. This has created an unbalanced crown weight distribution and places the cantilevered load over the adjacent row of garages on the VDM property. There are several instances of poor structure such as codominant leaders and included bark from years of utility pruning. Tree has developed a lean in the direction of the VDM garages and although the root collar indicates a stable root structure, the cantilevered weight of the crown combined with the uncorrected lean could lead to failure. Tree is in poor health with indications of stress such as moderate evidence of psyllid infestation and tortoise beetle damage to the leaves.	Southern portion of crown is oversized and will require consistent pruning to maintain a balanced shape and reduce the weight of the cantilevered limbs. Tree has outgrown its location and should be removed and replaced with a more suitable species in a location that does not conflict with overhead power distribution.
	COMMON NAME	TARGET PROXIMITY	OCC. RATE	HEALTH	DISPOSITION		
	manna gum	10	2	2	R		
3	<i>Eucalyptus viminalis</i>	Garage, Drive Aisle, Sidewalk	25.0	40	2	SCE has continually pruned northern portion of crown due to proximity to nearby overhead power lines. This has created an unbalanced crown weight distribution and places the cantilevered load over the adjacent row of garages on the VDM property. There are several instances of poor structure such as codominant leaders and included bark from years of utility pruning. Tree has developed a lean in the direction of the VDM garages and although the root collar indicates a stable root structure, the cantilevered weight of the crown combined with the uncorrected lean could lead to failure. Tree is in poor health with moderate indications of stress such as evidence of psyllid infestation and tortoise beetle damage to the leaves.	Southern portion of crown is oversized and will require consistent pruning to maintain a balanced shape and reduce the weight of the cantilevered limbs. Tree has outgrown its location and should be removed and replaced with a more suitable species in a location that does not conflict with overhead power distribution.
	COMMON NAME	TARGET PROXIMITY	OCC. RATE	HEALTH	DISPOSITION		
	manna gum	10	2	2	R		
4	<i>Eucalyptus viminalis</i>	Garage, Drive Aisle, R.O.W., Sidewalk	35.0	45	3	SCE has continually pruned northern portion of crown due to proximity to nearby overhead power lines. This has created an unbalanced crown weight distribution and places the cantilevered load over the adjacent row of garages on the VDM property. There are several instances of poor structure such as codominant leaders and included bark from years of utility pruning. Tree has developed a lean in the direction of the VDM garages and although the root collar indicates a stable root structure, the cantilevered weight of the crown combined with the uncorrected lean could lead to failure. Tree is in good health with slight indications of stress such as evidence of psyllid infestation and tortoise beetle damage to the leaves.	Southern portion of crown is oversized and will require consistent pruning to maintain a balanced shape and reduce the weight of the cantilevered limbs. Tree has outgrown its location and should be removed and replaced with a more suitable species in a location that does not conflict with overhead power distribution.
	COMMON NAME	TARGET PROXIMITY	OCC. RATE	HEALTH	DISPOSITION		
	manna gum	10	2	4	R		
5	<i>Eucalyptus viminalis</i>	Garage, Drive Aisle, Sidewalk	42.5	50	2	SCE has continually pruned northern portion of crown due to proximity to nearby overhead power lines. This has created an unbalanced crown weight distribution and places the cantilevered load over the adjacent row of garages on the VDM property. There are several instances of poor structure such as codominant leaders and included bark from years of utility pruning. Tree has developed a lean in the direction of the VDM garages and although the root collar indicates a stable root structure, the cantilevered weight of the crown combined with the uncorrected lean could lead to failure. Tree is in moderate health with slight indications of stress such as evidence of psyllid infestation and tortoise beetle damage to the leaves.	Southern portion of crown is oversized and will require consistent pruning to maintain a balanced shape and reduce the weight of the cantilevered limbs. Tree has outgrown its location and should be removed and replaced with a more suitable species in a location that does not conflict with overhead power distribution.
	COMMON NAME	TARGET PROXIMITY	OCC. RATE	HEALTH	DISPOSITION		
	manna gum	10	2	3	R		
6	<i>Eucalyptus viminalis</i>	Garage, Drive Aisle, Sidewalk	9.5	25	2	Young volunteer in moderate health with poor structure that is exhibiting symptoms of moderate stress such as crown dieback, evidence of psyllid infestation, and tortoise beetle damage to the leaves. Current size does not conflict with overhead power lines, but will develop identical issues as described with the previous eucalyptus trees in this area over time.	Tree is unsuitable for the location and will need consistent pruning once it matures to ensure safe clearance from nearby overhead power lines. It should be removed and replaced with a more suitable species in a location that does not conflict with overhead power distribution.
	COMMON NAME	TARGET PROXIMITY	OCC. RATE	HEALTH	DISPOSITION		
	manna gum	10	2	3	R		
7	<i>Eucalyptus viminalis</i>	Garage, Drive Aisle, Sidewalk	40.0	50	3	SCE has continually pruned northern portion of crown due to proximity to nearby overhead power lines. This has created an unbalanced crown weight distribution and places the cantilevered load over the adjacent row of garages on the VDM property. There are several instances of poor structure such as codominant leaders and included bark from years of utility pruning. Tree has developed a lean in the direction of the VDM garages and although the root collar indicates a stable root structure, the cantilevered weight of the crown combined with the uncorrected lean could lead to failure. Tree is in poor health with moderate indications of stress such as evidence of psyllid infestation and tortoise beetle damage to the leaves.	Southern portion of crown is oversized and will require consistent pruning to maintain a balanced shape and reduce the weight of the cantilevered limbs. Tree has outgrown its location and should be removed and replaced with a more suitable species in a location that does not conflict with overhead power distribution.
	COMMON NAME	TARGET PROXIMITY	OCC. RATE	HEALTH	DISPOSITION		
	manna gum	10	2	3	R		
8	<i>Eucalyptus viminalis</i>	Garage, Drive Aisle, Sidewalk	36.5	50	3	SCE has continually pruned northern portion of crown due to proximity to nearby overhead power lines. This has created an unbalanced crown weight distribution and places the cantilevered load over the adjacent row of garages on the VDM property. There are several instances of poor structure such as codominant leaders and included bark from years of utility pruning. Tree has developed a lean in the direction of the VDM garages and although the root collar indicates a stable root structure, the cantilevered weight of the crown combined with the uncorrected lean could lead to failure. Tree is in good health with slight indications of stress such as evidence of psyllid infestation and tortoise beetle damage to the leaves.	Southern portion of crown is oversized and will require consistent pruning to maintain a balanced shape and reduce the weight of the cantilevered limbs. Tree has outgrown its location and should be removed and replaced with a more suitable species in a location that does not conflict with overhead power distribution.
	COMMON NAME	TARGET PROXIMITY	OCC. RATE	HEALTH	DISPOSITION		
	manna gum	10	2	4	R		
9	<i>Corymbia citriodora</i>	Garage, Power lines, Drive Aisle, Sidewalk	27.5	65	4	The naturally upright and high branching structure of the lemon-scented gum has allowed this specimen to successfully grow past the overhead power lines with less oversight from SCE, which seems to have preserved its good form, balance, and structure. The trunk is very straight with adequate taper and appears very stable. The root collar is not well defined at the soil surface and may have been previously buried during the construction of an adjacent raised planter.	Using low impact excavation techniques and being careful not to damage the root collar or roots, uncover the root collar to see if
	COMMON NAME	TARGET PROXIMITY	OCC. RATE	HEALTH	DISPOSITION		
	lemon-scented gum	4	2	4	P		



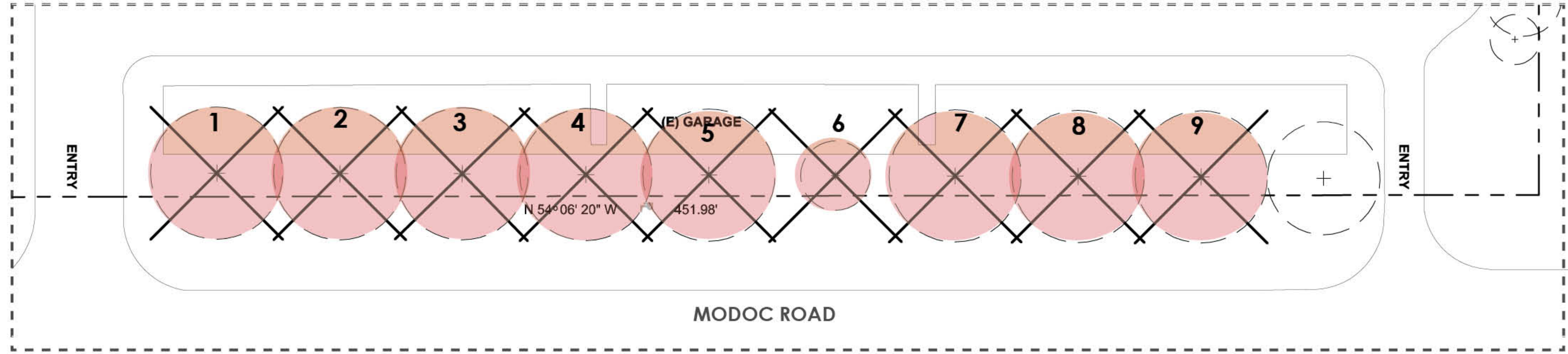
- EXISTING STRUCTURE, TYPICAL
- EXISTING TREE, TYPICAL
- PROPERTY LINE, TYPICAL
- TREE TO BE REMOVED, TYPICAL

ENLARGEMENT MAP SEE SHEET L5

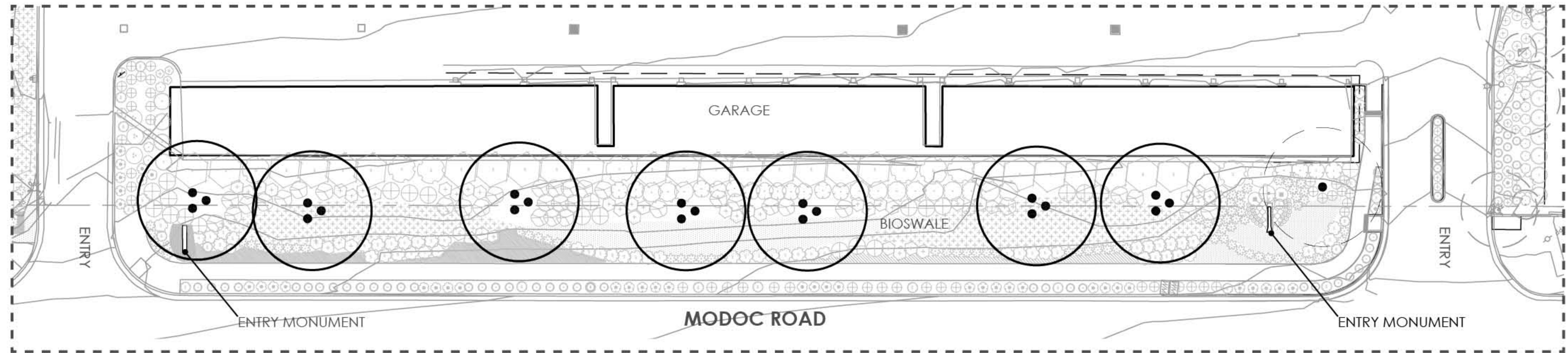
SEE ARBORIST'S TREE RISK ASSESSMENT REPORT FOR DETAILED DESCRIPTIONS AND RECOMMENDATIONS



TREE REMOVAL ENLARGEMENT MAP



TREE PROPOSAL ENLARGEMENT MAP



TREE SCHEDULE

QTY	BOTANICAL NAME	COMMON NAME	CONTAINER	WUCOLS
7	<i>Quercus tomentella</i>	ISLAND OAK	24" BOX	LOW